

## Introduction

American Innovations is pleased to announce version 1.2 of our Pipeline Compliance System Axis® (PCS Axis®) software. This document identifies enhancements available in PCS Axis 1.2. If you have questions or need additional information, contact PCS Technical Support at [pcstechservices@aiworldwide.com](mailto:pcstechservices@aiworldwide.com).

## Enhancements

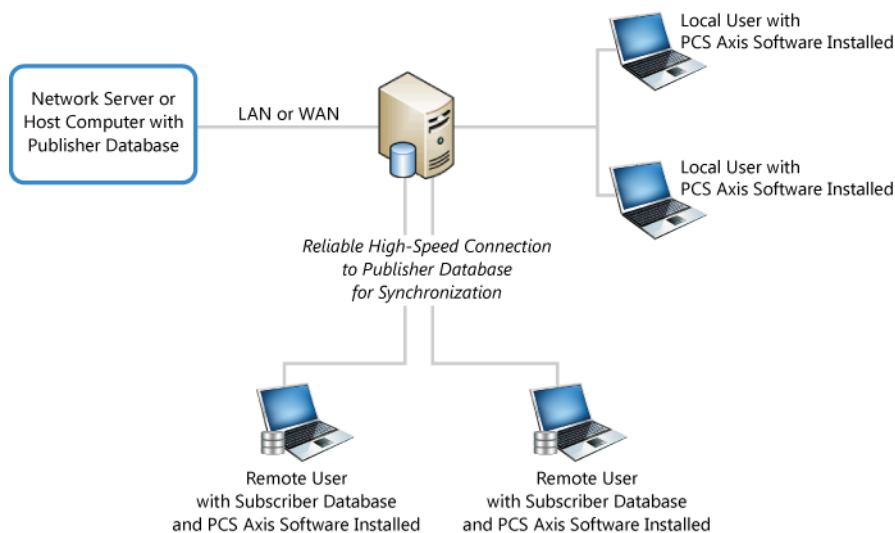
### Synchronization (Tools menu)

PCS Axis Synchronization uses a Microsoft SQL Server publisher/subscriber database model. The Publication database is the primary database on a network server or host computer. Each Subscription database is a copy of the Publication database. Remote users who do not have access to the Publication database can update data in a Subscription database on their local computer.

Synchronization supports one publisher with multiple subscribers running in a client-server network. Synchronizing data between the publisher and subscribers is achieved using merge/pull replication. Merge replication is used with the publisher database. Pull replication is used with subscriber databases.

Features of Synchronization include:

- Creating the Publication database (primary PCS Axis database).
- Setting up one or more subscribers (remote users).
- Synchronizing and re-initializing a Subscription database.
- Switching database connections at a subscriber.



## Release History

PCS Axis v1.1 Release:

- Indirect Survey Manager (ISM) (Modules > Indirect Survey Manager)

ISM includes the following features for working with continuous survey data:

- Data Entry Grid and Themes  
(*Data Entry > Edit ISM Data*)
- Survey Folders and Themes  
(*Data Entry > Survey Folder Maintenance*)
- Reports, Graphs, and Themes  
(*Reports/Graphs* menu)

ISM reports and graphs include: CIS Reports (Close Interval Survey Reports); AC CIS Reports (AC Close Interval Survey Reports); DCVG Reports (DC Voltage Gradient Reports); ACVG Reports (AC Voltage Gradient Reports); ACCA Reports (AC Current Attenuation Reports); Soil Resistivity Reports; and Pearson Reports.

- User Defined Fields  
(*Tools > Field and UDF Customizations > Continuous Surveys*)
- Field Computer and Themes  
(*Field Computer > Send, Receive*)
- Themes Management  
(*Tools > Themes Management; Tools > Facility Type Themes*)

- **Custom Module Management (CMM)**  
(*Modules > Custom Module Management*)

CMM is an optional add-on available for purchase. CMM allows users to work with facility types not included with PCS Axis by creating a user defined module with up to six user defined facility types. CMM includes the following features:

- Data Entry Grid and Themes  
(*Data Entry > Edit <module> Data*)

*Custom Module Management (CMM) Module, continued*

- Survey Folders and Themes  
(*Data Entry > Survey Folder Maintenance*)
- Schedules, Routes, and Themes  
(*Data Entry > Define Schedules, Edit Schedule Settings and Data Entry > Define Routes*)
- Reports, Graphs, and Themes  
(*Reports/Graphs* menu)

- User Defined Fields  
(*Tools > Field and UDF Customizations*)
- Themes Management  
(*Tools > Themes Management* and *Tools > Facility Type Themes*)

- **Email Notification**  
(*Tools > Email Notification*)

Email Notification is a feature for sending columnar reports as an attachment in an email at a regularly scheduled time to recipients. Recipients include PCS Axis users as well as non-PCS Axis users.

- **Field Computer**  
Send and receive continuous survey data for use in the ISM module.

## Product Support & Training

If you have a suggestion, question, feature request, or a bug to report-your feedback would be appreciated. Also if you have a training need for your organization or would like to know more about upcoming PCS Axis training classes, please use any of the following contact information to reach Technical Services:

Support E-mail: [pcstechservices@aiworldwide.com](mailto:pcstechservices@aiworldwide.com)  
Support Telephone: 1-800-229-3404 (select 1, then press 2)  
American Innovations <http://www.aiworldwide.com/>